

LED STREET LIGHT FAMILY

COLOGNE



B3 GERMANY
THE MASTERS OF LIGHT



COLOGNE LED STREET LIGHT FAMILY

The COLOGNE LED street light family has a sleek, minimalist design. Its unintrusive form integrates well into most any cityscape, making this one of our most popular models. The innovative lens design ensures that light falls only where it is really needed. Choose from three different sizes with mast-top or bracket mounting.





120/135 lm/W	-35 °C +50 °C	THD < 20 %	90 V - 305 V	IP 66	5 years
CRI > 70	10 % - 90 %	PF > 0.95	10 kV 10 kA	IK ≥ 08	50 000 hours

TECHNICAL SPECIFICATIONS*	COLOGNE L120 TYPE A	COLOGNE L100 TYPE A	COLOGNE L80 TYPE A
Wattage	120 W	100 W	80 W
Voltage range	90 - 305 V	90 - 305 V	90 - 305 V
Chip	Lumileds 3030 5050	Lumileds 3030 5050	Lumileds 3030 5050
Chip quantity	144 pcs. 32 pcs.	108 pcs. 32 pcs.	96 pcs. 24 pcs.
Luminous efficacy	120 lm/W 135 lm/W	120 lm/W 135 lm/W	120 lm/W 135 lm/W
Driver	Inventronics / Meanwell	Inventronics / Meanwell	Inventronics / Meanwell
Power factor	> 0.95	> 0.95	> 0.95
CCT	3000 - 6500 K	3000 - 6500 K	3000 - 6500 K
CRI	> 70	> 70	> 70
Surge protection	10 KV / 10 KA	10 KV / 10 KA	10 KV / 10 KA
Operating temperature	-35 to +50 °C	-35 to +50 °C	-35 to +50 °C
Protection class	Class I / II	Class I / II	Class I / II
IP rating	IP66	IP66	IP66
IK rating	≥ IK08	≥ IK08	≥ IK08
Rated lifetime	> 50 000 hours	> 50 000 hours	> 50 000 hours
Housing material	Die-cast aluminum	Die-cast aluminum	Die-cast aluminum
Photocell base	Yes	Yes	Yes
Installation spigot	50 / 60 / 76 mm	50 / 60 / 76 mm	50 / 60 / 76 mm
Control system	Optional	Optional	Optional
Warranty	5 years	5 years	5 years
Certifications	ENEC / CE / CB / RoHS	ENEC / CE / CB / RoHS	ENEC / CE / CB / RoHS
Fitting size	675 × 257 × 82 mm	675 × 257 × 82 mm	675 × 257 × 82 mm
Packing size	720 × 300 × 120 mm	720 × 300 × 120 mm	720 × 300 × 120 mm
Net weight	6.3 kg	6.1 kg	6.1 kg
Gross weight	7.3 kg	7.1 kg	7.1 kg

*Technical specifications subject to change at any time.



COLOGNE M60
TYPE B

60 W
90 - 305 V
Lumileds 3030 5050
72 pcs. 24 pcs.
120 lm/W 135 lm/W
Inventronics / MW / Philips
> 0.95
3000 - 6500 K
> 70
10 KV / 10 KA
-35 °C to +50 °C
Class I / II
IP66
≥ IK08
> 50 000 hours
Die-cast aluminum
Yes
50 / 60 / 76 mm
Optional
5 years
ENEC / CE / CB / RoHS
550 × 242 × 75 mm
600 × 280 × 120 mm
4.1 kg
4.8 kg

COLOGNE M40
TYPE B

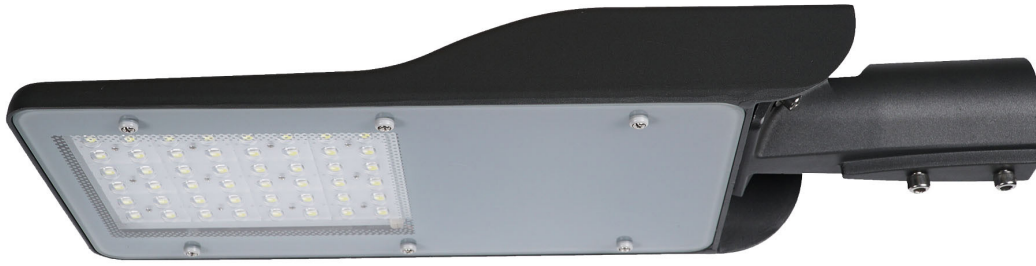
40 W
90 - 305 V
Lumileds 3030 5050
48 pcs. 16 pcs.
120 lm/W 135 lm/W
Inventronics / Meanwell
> 0.95
3000 - 6500 K
> 70
10 KV / 10 KA
-35 °C to +50 °C
Class I / II
IP66
≥ IK08
> 50 000 hours
Die-cast aluminum
Yes
50 / 60 / 76 mm
Optional
5 years
ENEC / CE / CB / RoHS
550 × 242 × 75 mm
600 × 280 × 120 mm
4.1 kg
4.8 kg

COLOGNE S30
TYPE C

30 W
90 - 305 V
Lumileds 3030 5050
48 pcs. 16 pcs.
120 lm/W 135 lm/W
Inventronics / Meanwell
> 0.95
3000 - 6500 K
> 70
10 KV / 10 KA
-35 °C to +50 °C
Class I / II
IP66
≥ IK08
> 50 000 hours
Die-cast aluminum
Yes
50 / 60 mm
Optional
5 years
ENEC / CE / CB / RoHS
345 × 195 × 83 mm
390 × 235 × 123 mm
1.8 kg
2.2 kg

COLOGNE S20
TYPE C

20 W
90 - 305 V
Lumileds 3030 5050
24 pcs. 8 pcs.
120 lm/W 135 lm/W
Inventronics / Meanwell
> 0.95
3000 - 6500 K
> 70
10 KV + 10 KA
-35 °C to +50 °C
Class I / II
IP66
≥ IK08
> 50 000 hours
Die-cast aluminum
Yes
50 / 60 mm
Optional
5 years
ENEC / CE / CB / RoHS
345 × 195 × 83 mm
390 × 235 × 123 mm
1.8 kg
2.2 kg



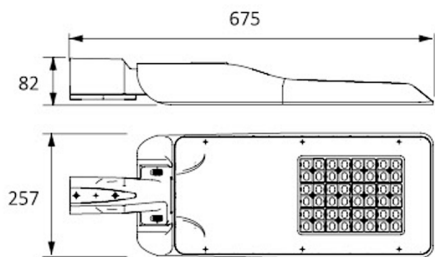
A



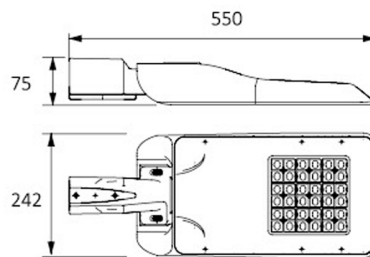
B



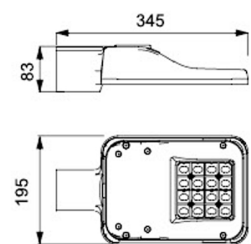
C



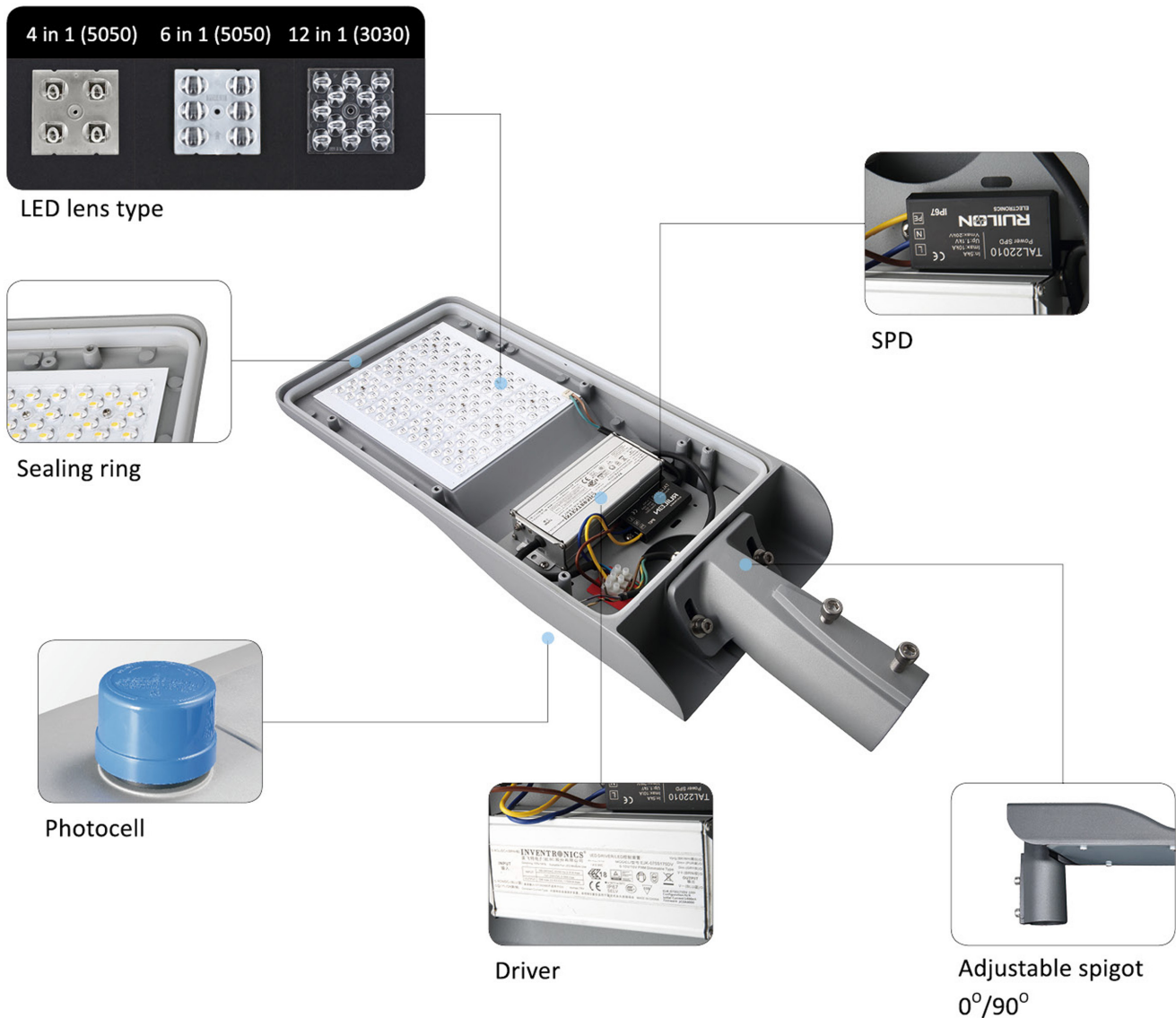
A



B



C



B3 SMART CITY CONTROL SYSTEM

The COLOGNE street light family can be optionally equipped with our Smart City control system. In addition to realizing energy savings of up to 35 % through intelligent dimming, myriad other functions improve the quality of light and life in your city. Groups of street lights can be linked into mesh or tree topologies with different communication technologies, including RF, LoRa and PLC. Data concentrators allow you to easily and comfortably manage all Smart City functions remotely from a central control room via RF or GSM / GPRS / 3G.

Key features of the B3 Smart City control system include:

- On/off control
- Dimming control
- Timed control
- Consumption monitoring
- Data Storage
- Group management
- Fault alerts
- Status inquiry

Please request our "B3 Smart City control system" white paper for more information on how our intelligent control systems can improve the quality of light and life in your city. Our specialists look forward to advising you in a personal conversation.



individually, customer specification, customized, dimming, create your light



B3 GERMANY
THE MASTERS OF LIGHT

B3 GERMANY
Rua Conselheiro Moreira de Barros, 2573
São Paulo SP, CEP 02430-00

Tel. +55 (11) 98871-0115
www.b3germany.com